



CHAMPION
C L A S S I C

SPECIALTY DRY FREIGHT VAN

CL



Great Dane



CHAMPION **CL** C L A S S I C

Timeless Workmanship Driven to Succeed

The mark of enduring excellence, Great Dane Champion CL dry freight van is engineered for the road ahead with standard superior quality and heavy-duty productivity. The most versatile trailer design in the industry, the CL can be customized to specifically fit the requirements of any number of operations.

Available in aluminum and stainless steel exteriors, shallow and deep drop vans for high-cube hauling applications, and FRP vans, the Champion CL dry freight van is as innovative as it is timeless.



Great Dane

Meticulous in its workmanship and designed for innovation, the Champion CL dry freight van can meet the highest of expectations with precision.



■ **Versatile, Durable Design**

Offering extreme customization, this trailer can be designed to fit the unique needs of any number of operations.

■ **Front End Protection**

The lower front of trailer is protected from corrosion by a stainless steel front bottom rail. The upper coupler is constructed with galvanneal components and additional rust-preventative coatings for a long-lasting, strong and durable connection.

■ **Premium Landing Gear**

Great Dane's Model 60 landing gear features all-bolted construction for ease of repair and maintenance, and is strongly braced with angled bracing both fore and aft and with K-bracing between the legs.

■ **Durable Roof Construction**

Aluminum .040" roof sheet is tension-mounted and joined to the top rail with an extruded aluminum J-molding for durability and longevity, as well as resistance to edge abrasion.

■ **EnduroGuard Rear Frame**

Galvanneal steel combined with stainless steel to create an effective barrier against corrosion that delivers enhanced durability and enduring appearance throughout the life of the trailer.



■ **Door Construction**

Composite swing-type rear doors feature galvanized steel exterior and interior skins have a resilient polymer core that helps eliminate internal corrosion as compared to wood-core doors.

■ **LED Lamps and 10-Year Wiring Harness**

100% LED Grote lamps are designed to improve visibility and extend service life. This all-LED system comes standard with the fully modular, maintenance-free Long Life Light System backed by a 10-year warranty.

■ **Fuel Efficient Tires**

Bridgestone R-197 Ecopia tires feature low rolling resistance and a new IntelliShape™ sidewall design that removes weight without sacrificing durability.

■ **Premium Wheel End System**

Stemco's Platinum Performance Plus Wheel End System features an exclusive 6-year limited warranty.

■ **Multiple Interior Lining Options**

Versatility allows for maximum interior width, extreme durability, flexible cargo securement, plus weight and maintenance savings.

■ **Side Door Configurations**

are available in multiple locations and door sizes.



Multiple interior lining options allow for maximum interior width, extreme durability, cargo securement, plus weight and maintenance savings.



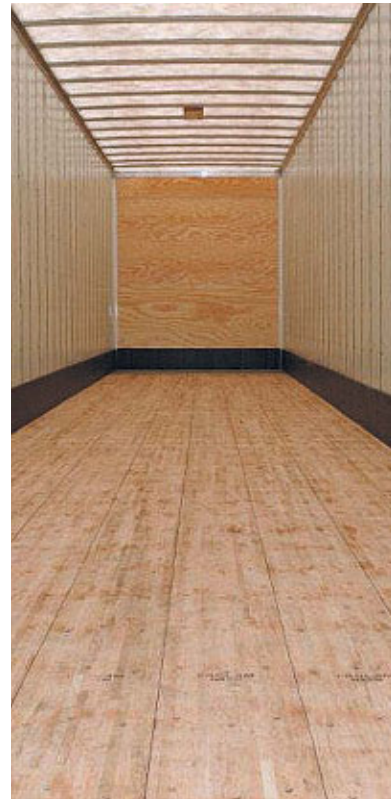
■ **Hardwood Plywood Lining**

Horizontally installed with wafer-head metal drill screws for a snag-free lining. Steel hat section uprights are located on 24" centers with extra uprights in high stress areas.



■ **SSL Panel Lining**

For extreme durability, SSL panel lining has a puncture strength nearly six times greater than hardwood plywood and over four times greater than MDPE plastic. Optional SSL front wall shown in picture



■ **PunctureGuard Lining**

Designed to protect a trailer's interior walls from everyday abuses, PunctureGuard scuffbands and wall liners are incredibly thin for more inside width, yet extremely puncture-resistant. PunctureGuard provides the extra protection that will extend the life of your trailer, load after load, year after year.



■ **PunctureGuard Lining (Insulated)**

A combination of proven sheet-and-post design with the most advanced modular panel foaming technology of a reefer, the semi-insulated option puts temperature and innovation in control to protect even the most delicate cargo. Standard with PunctureGuard lining for impact resistance throughout the life of the trailer.



■ **Sidewall Protection** from forklift and cargo damage is provided by a 12" high corrugated galvanized, roll-formed steel scuffband that extends full length to the front wall. Additional methods of sidewall protection vary in types, materials and heights.



■ **Logistic-Style Uprights and Post Spacing Options** A-slot logistic tracks on 4" vertical centers are optional. Post spacing options are available on 12", 16" and 24" on plywood lining.



■ **Various Cargo Restraint** options are available, including overlaid and recessed type-A and type-F horizontal track. Optional sidewall 'D' rings and floor bull rings are also available.



■ **Interior Lighting** for increased visibility needs, LED dome and spotlights are available.



■ **Roof System** features tension-mounted aluminum roof sheets permanently bonded to galvanized, anti-snag roof bows, and then secured with two fasteners to the side rails for reinforcement.



■ **Roof Lining Options** provide protection for the roof bows and roof from cargo or forklift damage. Available in plywood, PunctureGuard and galvanized steel. (Galvanized steel shown)



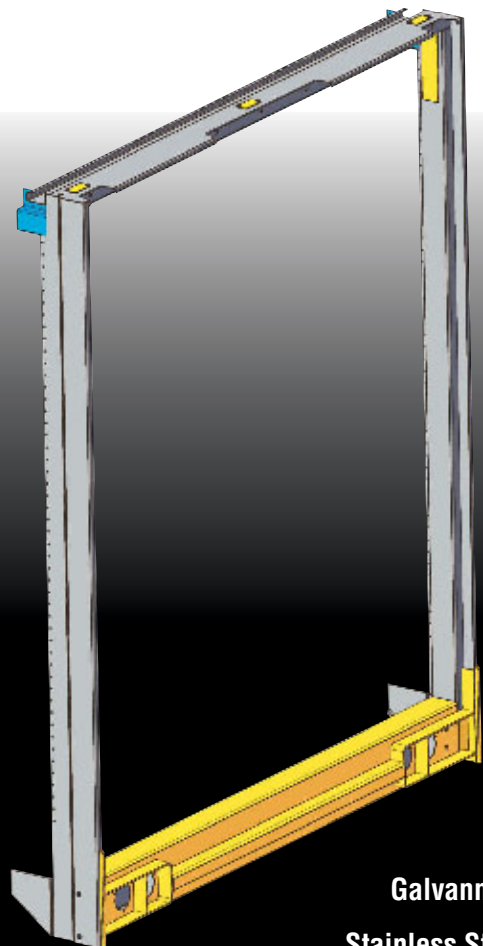
■ **Durable Floor System** provides strength in key high stress areas. A net 1.38" laminated hardwood floor is secured with 2 screws in an alternating pattern, and is available with 3 screws for added strength.



■ **Multiple Flooring Options** available including laminated hardwoods in various thicknesses, hardwood composite floors, and aluminum dry cargo floors.



The Standard Rear Frame for Great Dane Champion Dry Vans



- Galvanneal
- Stainless Steel
- Carbon Steel

EnduroGuard™

The structurally superior rear frame design that fights off corrosion

Engineered with a combination of galvannealed carbon steel and stainless steel components, EnduroGuard delivers an exceptional level of corrosion protection.

The Advantages of EnduroGuard

- Excellent corrosion resistance
- Proven durability and strength
- Stainless steel components in high-impact areas
- Unlike galvanized steel, resists scaling, flaking and discoloration

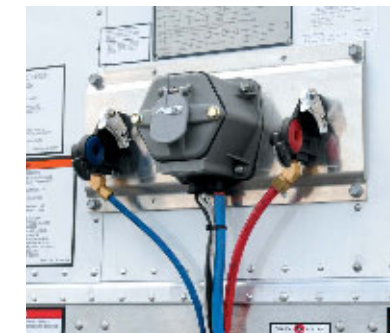
EnduroGuard rear frames not only add value, but deliver enhanced durability and lasting appearance throughout the life of a Champion dry van.



Scan this QR code to watch our informative EnduroGuard video, or visit our website at www.greatdanetrailers.com/enduroguard for more details.



■ **Front End Protection** from impact and corrosion is provided by a stainless steel front bottom rail and stainless fasteners. A weld-on stainless steel rolled lip that protects the upper coupler from fifth-wheel impact is optional.



■ **Air and Electrical Connections** are mounted to the front wall on an aluminum mounting channel for easy access and reduced maintenance. A large protector allows for easy access to air and electrical lines.



■ **Extruded Aluminum Hinge** allows doors to open fully to sides and break away in the event of severe impact.



■ **Painted Black Hubs & Powder-Coated Wheels** improve appearance over the life of the trailer. Powder-coated wheels provide enhanced corrosion protection and durability, while reducing maintenance and refurbishing frequency.



■ **Side Door Design** delivers unparalleled performance. With the unique low-profile Blade lock closure design there are no protruding hinges or lock rods, protecting side doors from damage. The Blade lock with compression seals exerts constant pressure along the full height of the door's frame.



■ **LED Exterior Light Package** features Grote's MicroNova DOT lamps and dual-intensity ID cluster lights. An option for five header lights with outer turn signal is available. Also standard is the industry's best wiring harness, the Long Life Light System backed by a 10-year warranty. This sealed harness prevents moisture intrusion, allows for custom wiring, and is extremely durable.



■ **Optional Roll-Up Door** is available for operations that require loading in a limited space. A sturdy, reinforced roll-up rear door frame provides added security.



■ **Lift Gate Prep** Installation preparation is available, including rail-lift and tuck-away options.





■ **Drop-Deck Van** Great Dane electronic vans are designed to meet specific high-cube hauling needs. With features and options especially designed for high-capacity applications, electronic vans offer 2" increment drop depths up to 16" and have variable drop location options. The interior deck behind the drop is flat allowing for easy loading. Smaller tires are used to achieve the larger amount of drop. Multiple side door locations and widths are available.

■ **Versatile, Durable Design** With extreme customization and heavy-duty productivity, this trailer can be designed to fit the unique needs of any number of operations.



■ **Pintle Hooks** and pintle hook accessories are available for large combination vehicles.



■ **Access Systems** includes various types of steps, ramps and platforms.



Great Dane



■ **Wheel Options** A variety of wheel selections to help increase payload and fuel savings are available.

- Aluminum Wheels
- Wide-Base Steel Wheels
- Wide-Base Aluminum Wheels



■ **Tire Options** Optional tire brands are available in dual- and wide-base styles. EPA SmartWay®-verified and CARB compliant brand options also available.



■ **Automatic Tire Inflation Systems** help extend tire life and increase fuel efficiency by using compressed air from the tractor to maintain tire pressure settings during operation. Multiple tire inflation systems are available as options.



■ **Air Disc Brakes** offer reduced stopping distances when compared to drum brakes and help reduce brake fade. A variety of options are available.



■ **Galvanized Component Options** include crossmembers and side steps.



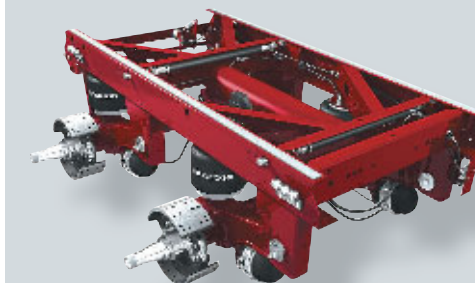
■ **Aerodynamic Options**

Industry's widest selection of aerodynamic skirts and other devices are available.



■ **Great Dane delivers EPA Certified SmartWay® trailer systems and components** Customers committed to measuring and improving the efficiency of their freight operations can adopt a range of trailer systems and components that can help to significantly lower emissions and reduce fuel consumption using aerodynamic and tire technologies approved by the U.S. Environmental Protection Agency's SmartWay Transport Partnership.

Suspension Options



■ **Lightweight Suspension Package**

Optimized for dry-freight sliding tandems, the Hendrickson HKANT-40K Air-Ride Suspension provides weight savings and reliable performance for a smoother ride and cargo protection. This system also features long-life Tri-Functional pivot bushings for a smooth ride and Quik-Align for fast and easy axle alignments.



■ **Heavy-Duty Air-Ride Suspension Package**

Available for dry freight and specialty vans and refrigerated trailers. The VANTRAAX HKANT – 46K features a tandem slider tailor-made for heavy-duty applications and incorporates the patented QUIK-DRAW pin activation system, high-strength main rails, and "K" braces for durability and frame strength.





CorroGuard
PROTECTION

CorroGuard is the most cost-effective corrosion solution available. It not only looks good, but saves you money and adds life to your trailer.

CorroGuard is a spray-in-place thermoplastic coating engineered for superior long-term protection from road abrasion, impact, and corrosion.

The Advantages of CorroGuard

- Highest level of corrosion, impact and abrasion protection available
- Provides the most complete coverage of suspension systems and landing gear
- Textured surface and black color offers significantly better appearance compared to galvanizing and other undercoatings
- Highest physical properties including tensile, tear, and elongation
- Most cost effective solution that adds life to your trailer



Tough as nails, CorroGuard offers excellent chemical and corrosion resistance as well as superior impact resistance to withstand the harshest conditions on today's highways.



Scan this QR code to watch our informative CorroGuard video, or visit our website at www.greatdanetrailers.com/corrogard for more details.



UNRIVALED PERFORMANCE.
FROM THE WRENCH TO THE ROAD.



ADVANTEDGE
National Aftermarket Parts & Service Program

Why trust the service of your premium quality Great Dane trailer to just anyone?

Our technicians know Great Dane trailers better than anyone. That's why service at your Great Dane branch or dealer offers more than just simple repairs. Unlike independent shops, Great Dane locations are staffed with trained technicians knowledgeable about the most current products and repair techniques. Plus, our direct connection to the factory ensures you get the parts you need when you need them.

Drive away with more confidence — Great Dane Genuine Parts and Authorized Service.

Support — Where you need it, When you need it.

Great Dane's AdvantEDGE Program connects you to a nationwide network of service locations to make your operations more reliable and easier to manage. Get peace of mind with 24-hour emergency road service, parts price protection, controlled ordering and invoicing, and much more.

Enroll free online or at any participating Great Dane branch or full-service dealer.

Learn more at www.greatdanetrailers.com/advantedge



CL

TIMELESS
WORKMANSHIP
DRIVEN TO
SUCCEED

Great Dane looks forward to assisting you with all your trailer needs.

We're dedicated to serving you now and in the future. Whether you are seeking new or used trailers, or convenient maintenance or service, we're here for you. Let us prove it.



Great Dane

DRIVE AWAY WITH MORE

CL



Great Dane

www.greatdanetrailers.com

Great Dane
602 E. Lathrop Avenue
Savannah, GA 31415
www.greatdanetrailers.com